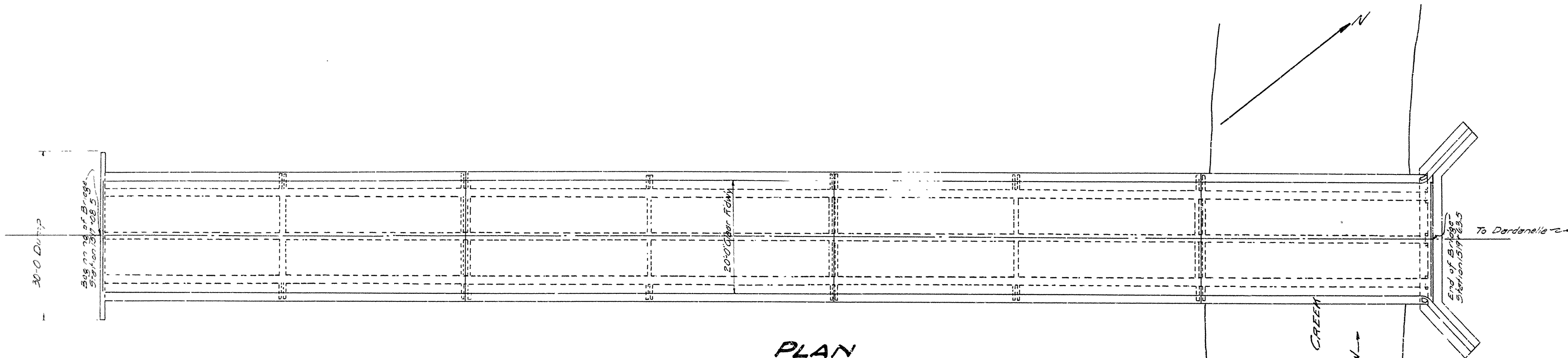


Year	Job No.	Sheet No.	Total Sheets
1929	801	1	7

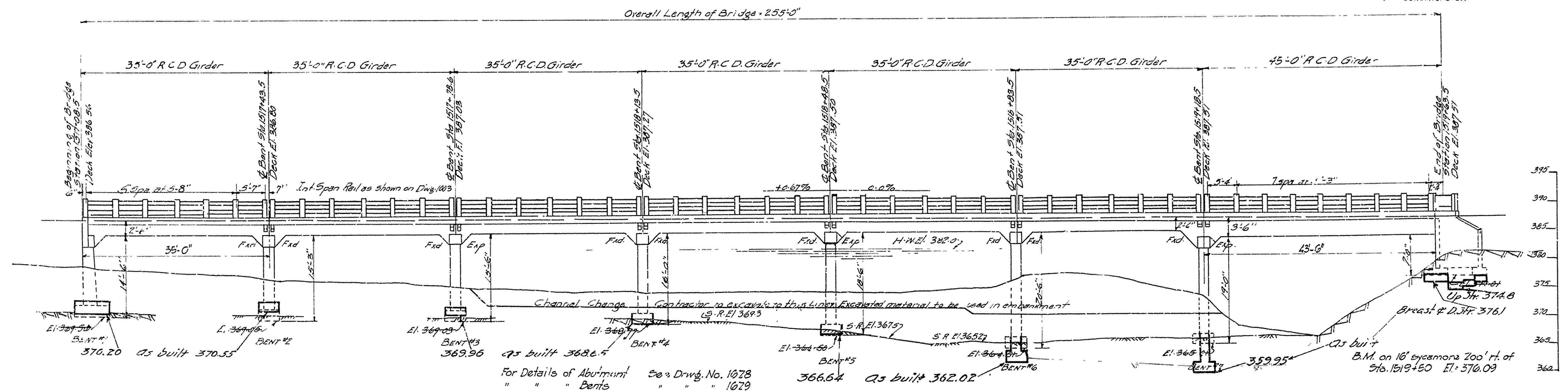


PLAN

LITTLE SHOAL CREEK
Flow →

QUANTITIES

Hem 12 Common Excav. (Clearing Channel)	2900 Cu Yds
" 13 Dry Excav. for Strs.	81 "
" 13 Wet " " "	72 "
" 13 SR. " " "	375 "
" 54 Class 'A' Concrete	123.24 "
" 54 " " " " "	266.31 "
" 35 Reinf. Steel	85,730 Lbs.
" 74 Conc. Handrail	57 Lin. Ft.



ELEVATION

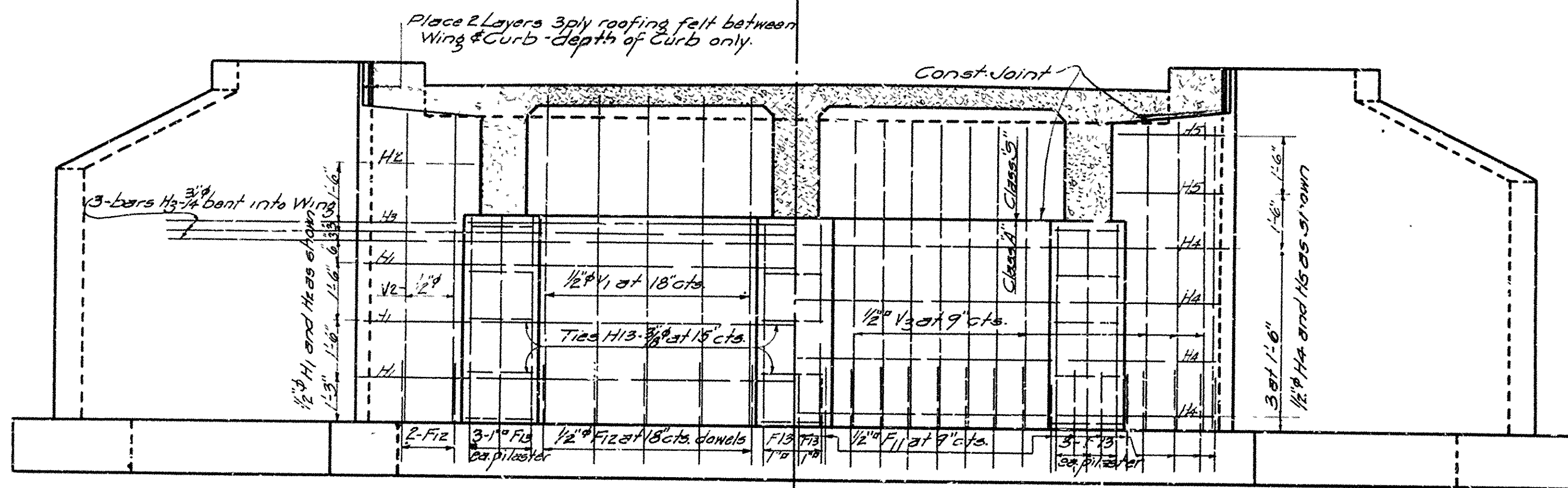
For Details of Abutments See Drwg. No. 1628
 " " " Bents " " " 1629
 " " " 35' R.C.D. Gir. " " " 1003
 " " " 45' " " " " " 1005

**LAYOUT OF BRIDGE
OVER LITTLE SHOAL CREEK
LOGAN COUNTY**
 ROUTE 22 SEC. 4
 ARKANSAS STATE HIGHWAY DEPARTMENT
 LITTLE ROCK, ARK.
 DRAWN BY: E.A.M. DATE: 5-13-29
 CHECKED BY: DATE: 5-13-29
 BRIDGE No 1140 DRAWING No 1627

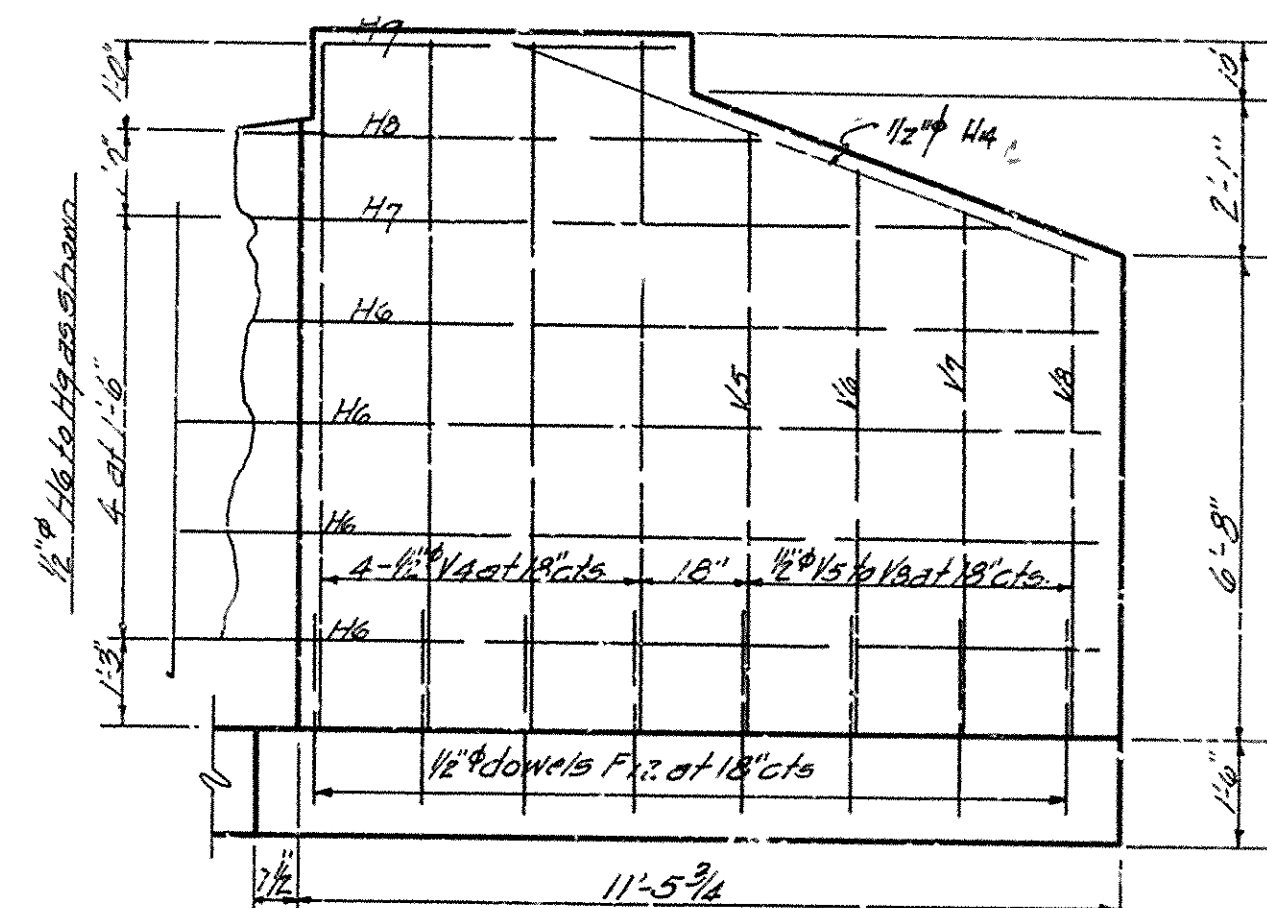
12-18-31
Actual testing elevations

M.B. Gamm
BRIDGE ENGINEER

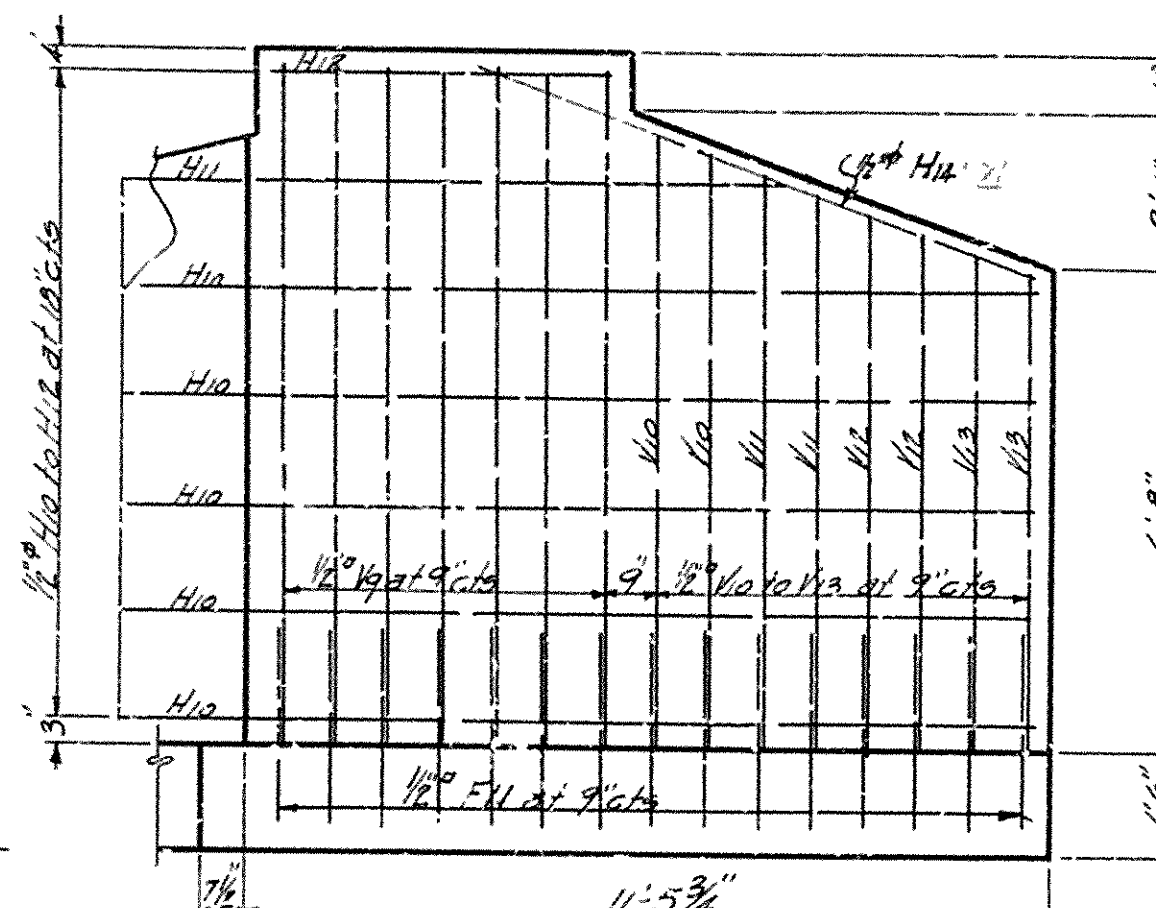
FISCAL YEAR	1929	SHEET No	2	TOTAL SHEETS	7
	166110		801		



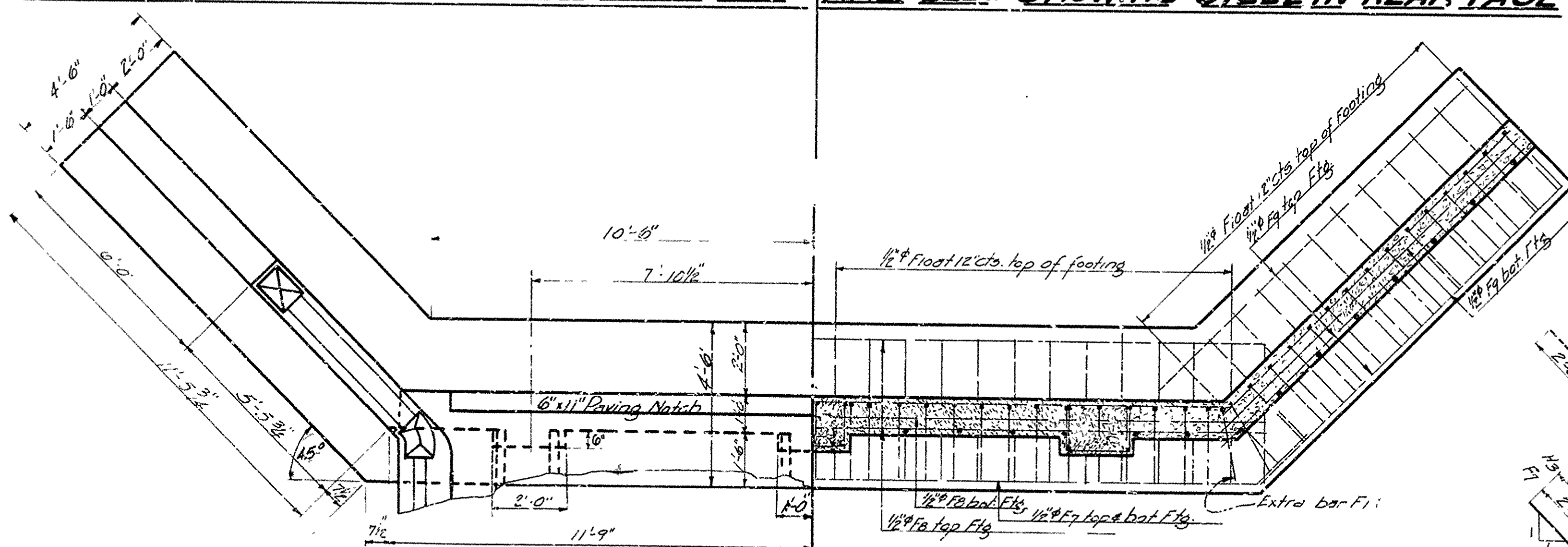
HALF ELEV. SHOWING STEEL IN FRONT FACE HALF ELEV. SHOWING STEEL IN REAR FACE



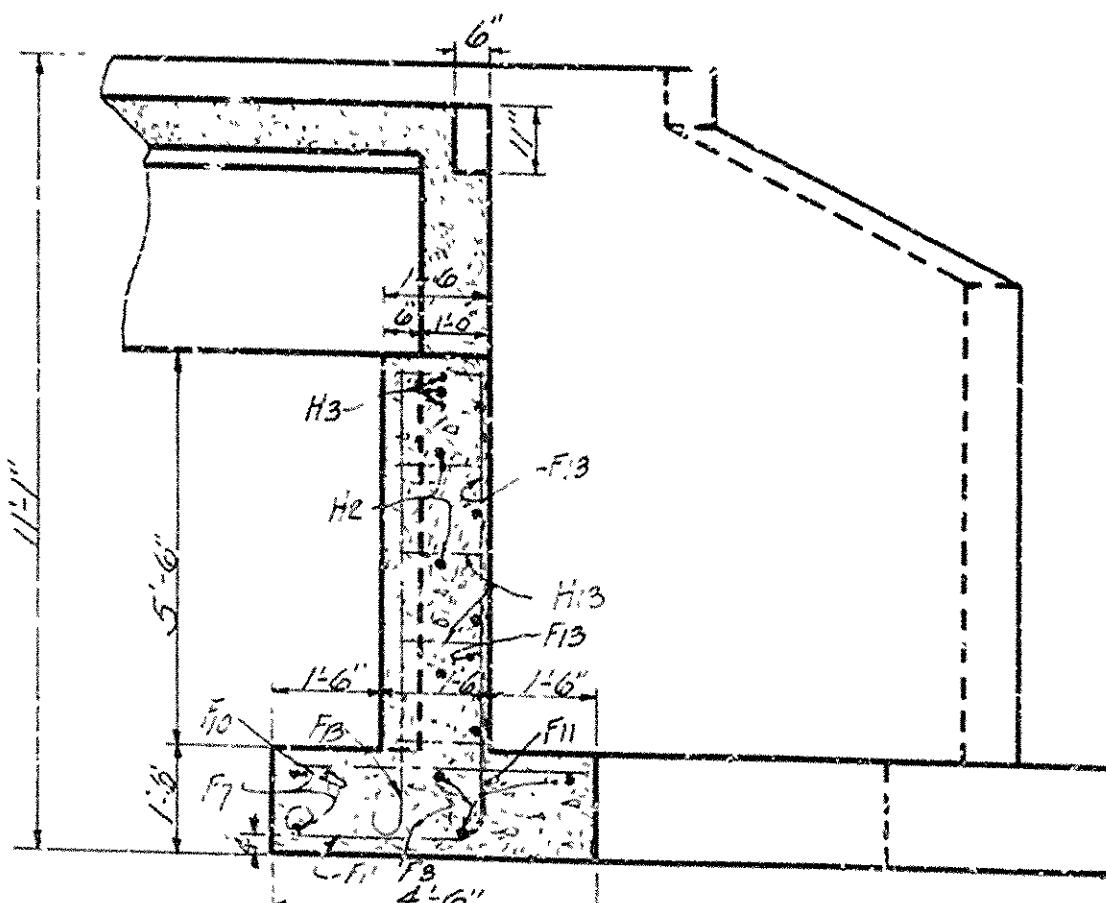
VIEW OF WING NORMAL TO FACE
SHOWING FRONT FACE STEEL



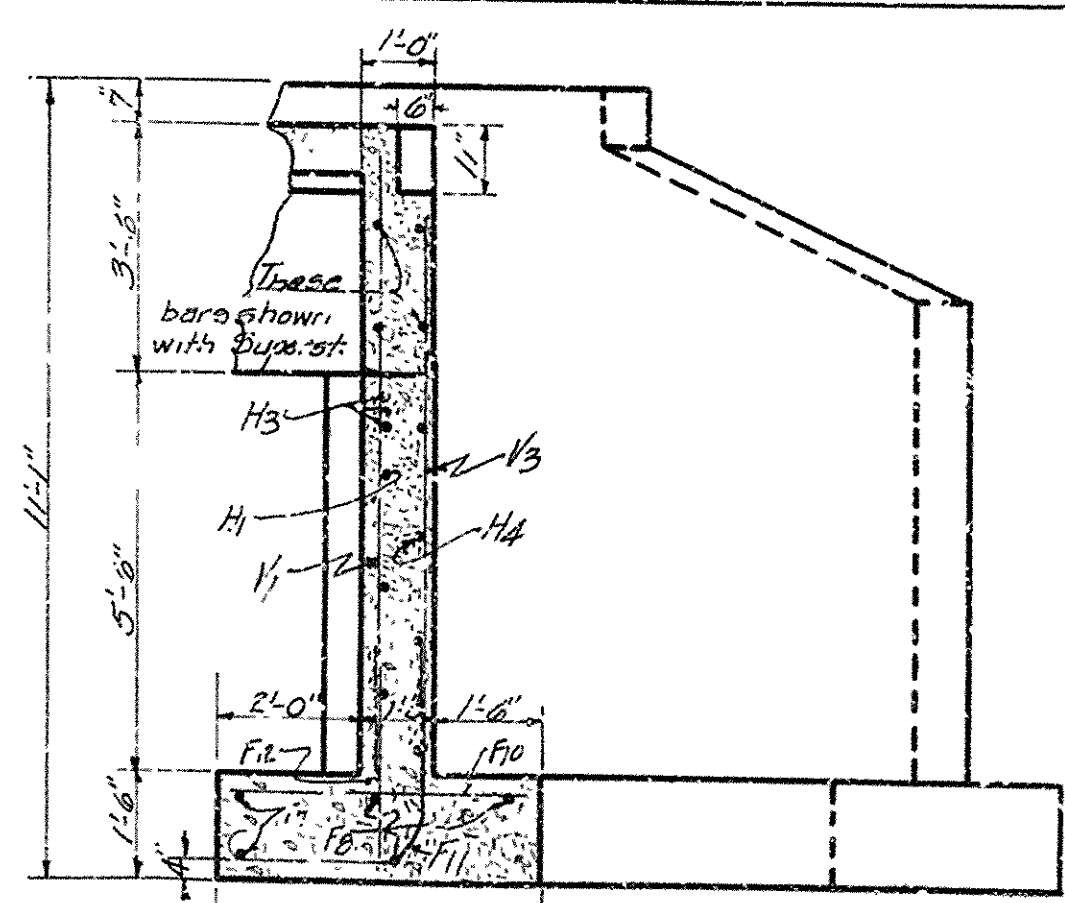
VIEW OF WING NORMAL TO FACE
SHOWING BACK FACE STEEL



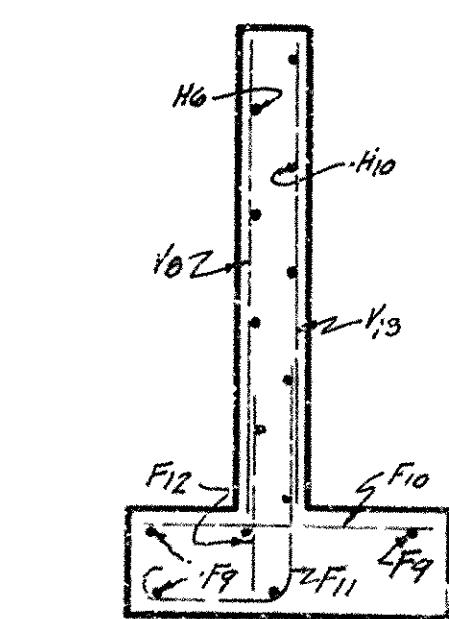
HALF PLAN SHOWING DIMENSIONS HALF PLAN SHOWING REINFORCEMENT



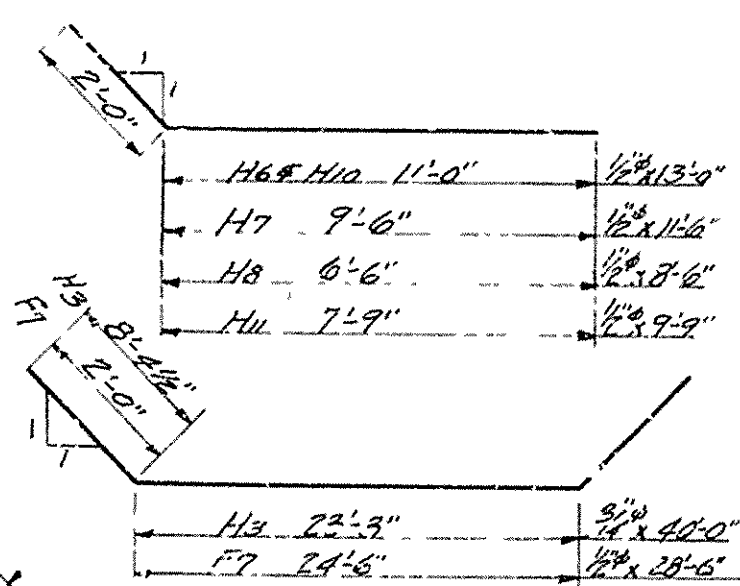
SECTION ON G



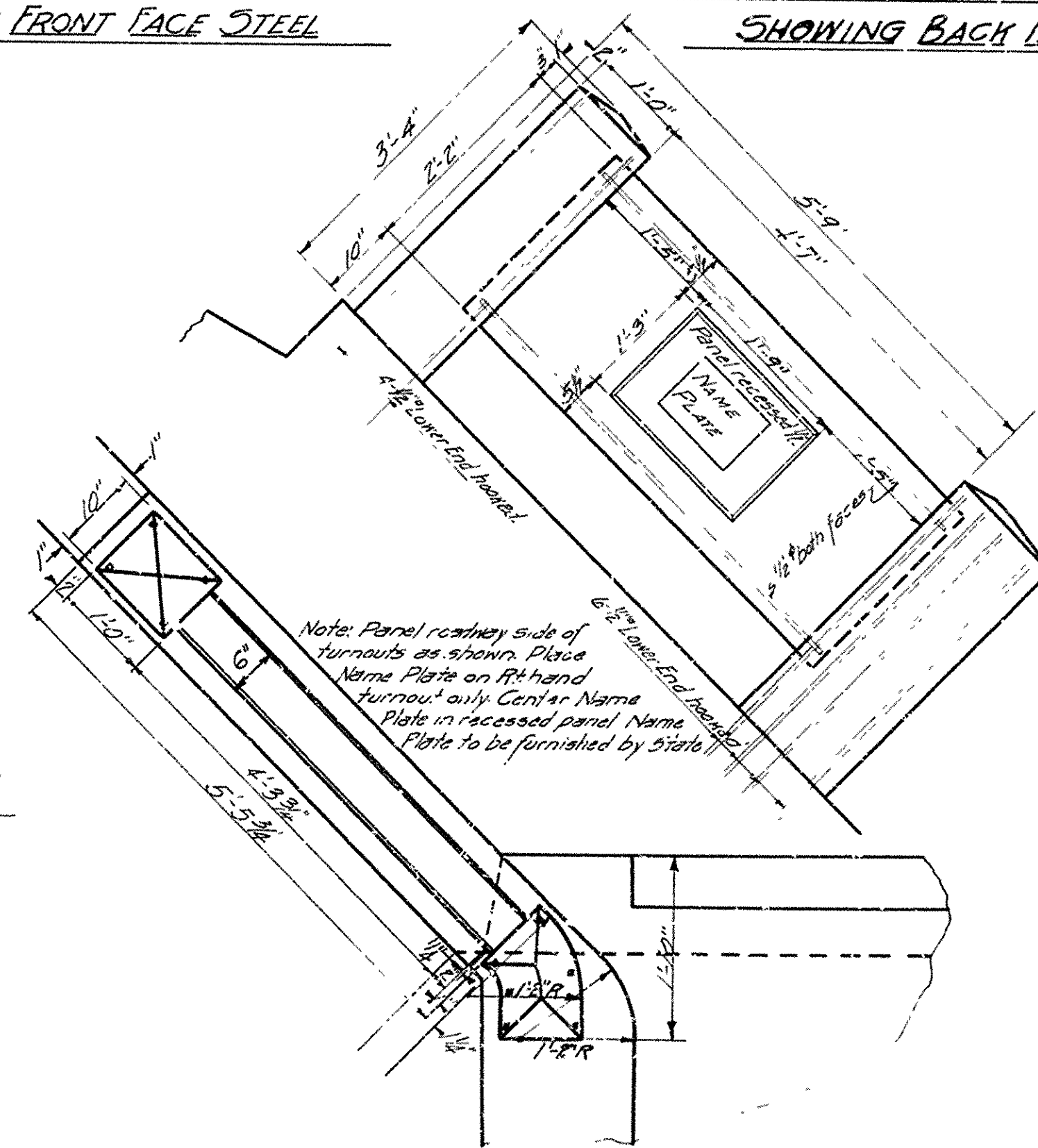
SECTION BETWEEN PILASTERS



END VIEW OF WING



DETAILS OF TURNOUT
Scale 3/8"=1'-0"



DETAILS OF ABUTMENT FOR
BRIDGE OVER LITTLE SMOAL CREEK
LOGAN COUNTY
ROUTE 22 SEC. 4

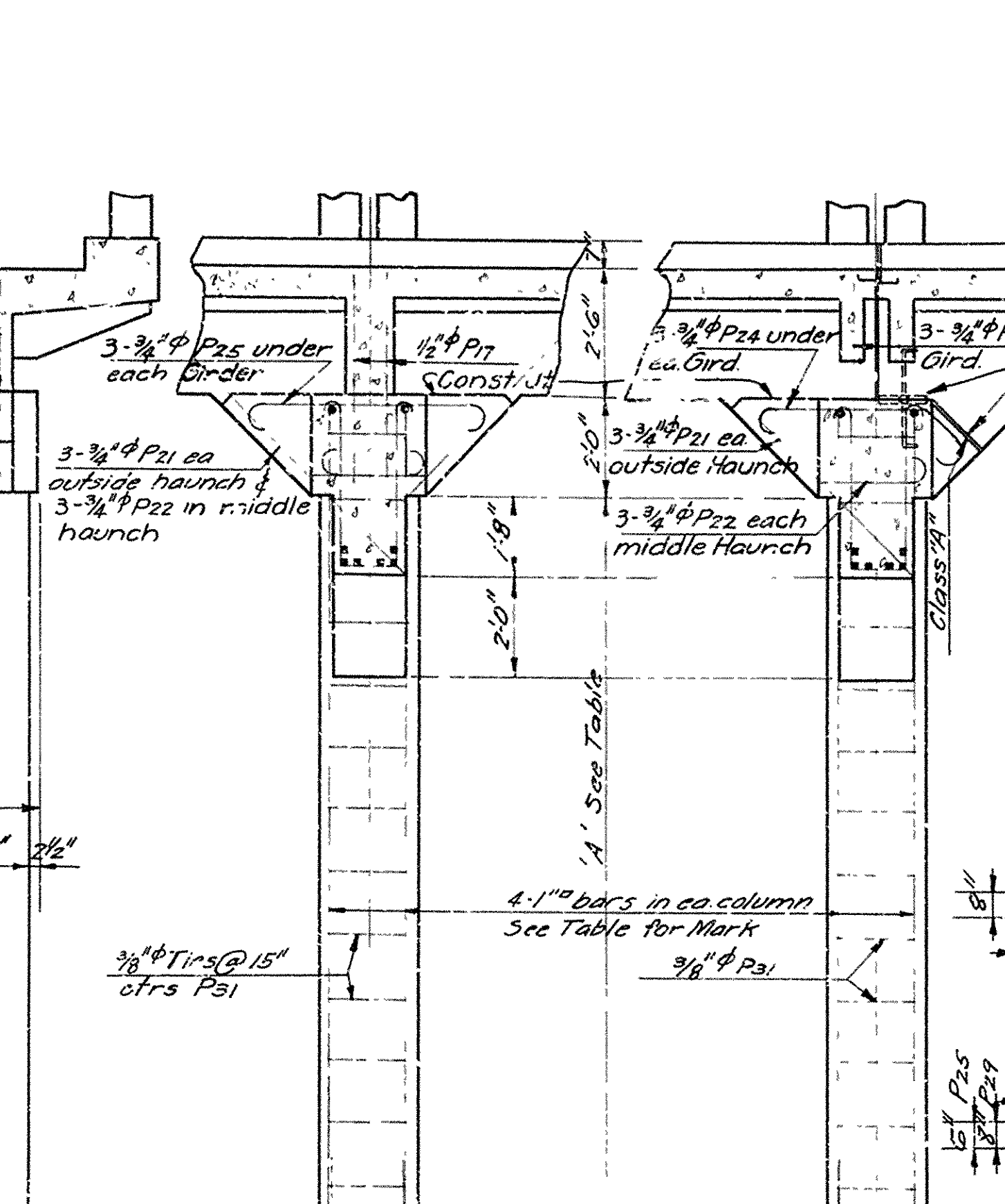
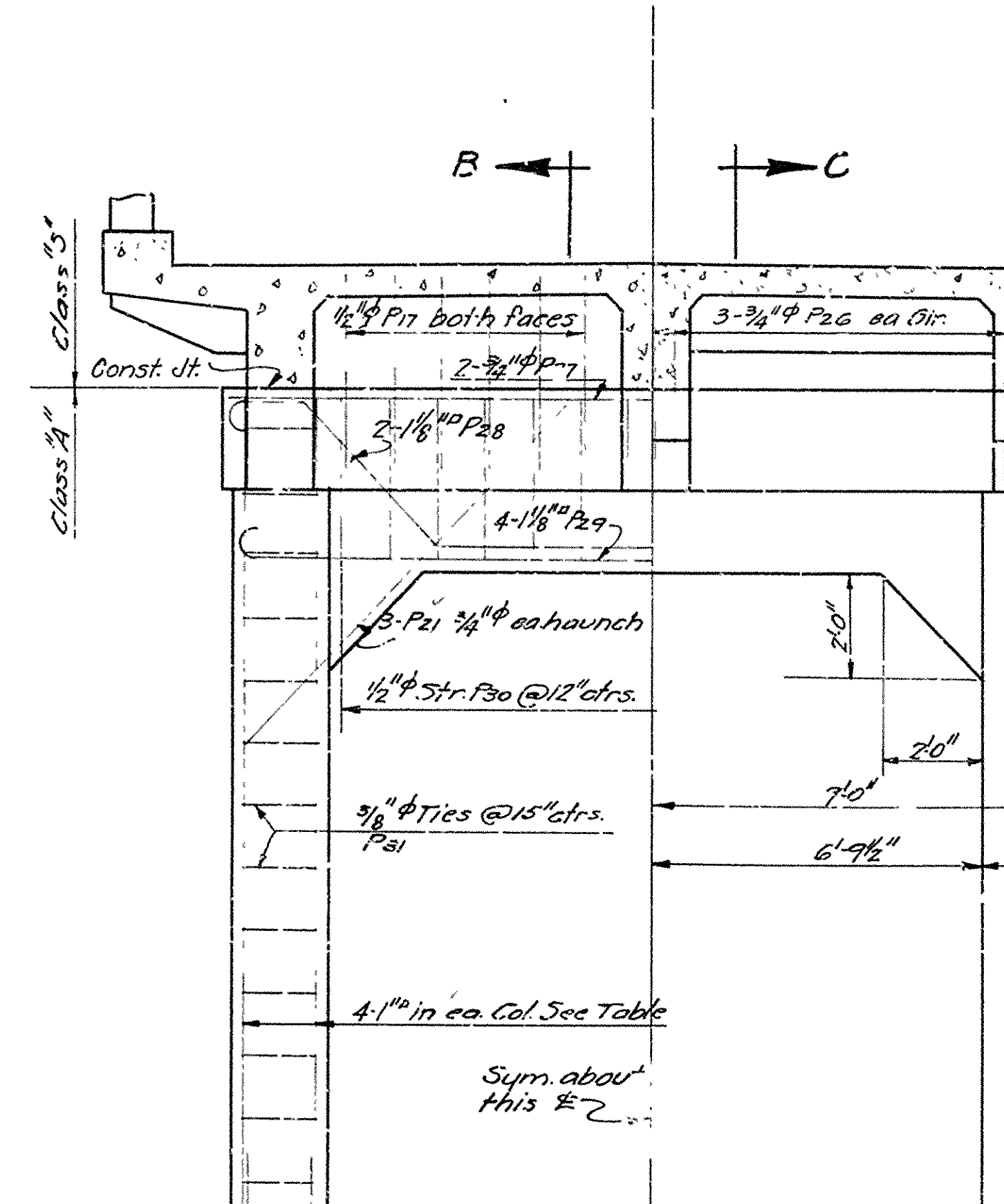
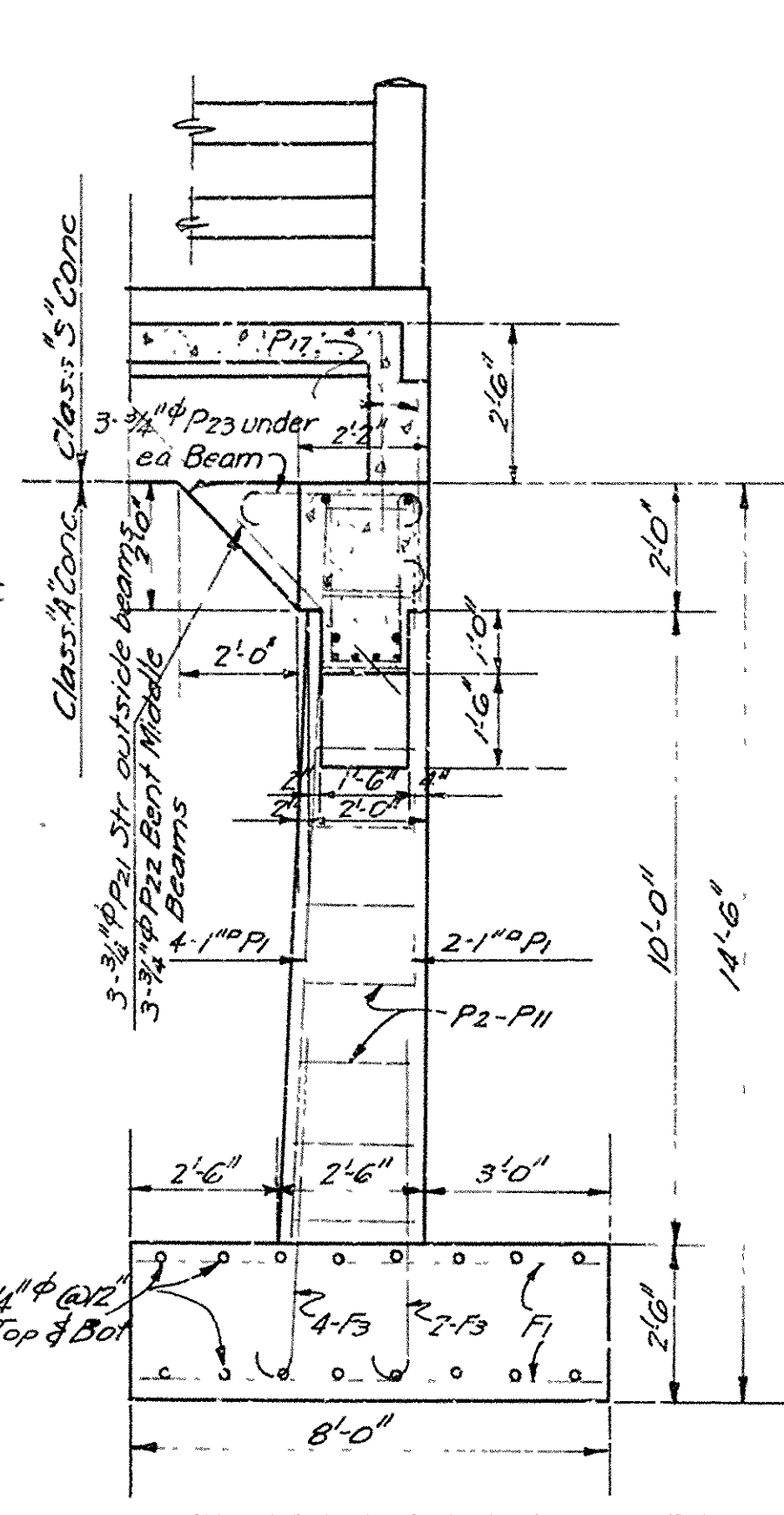
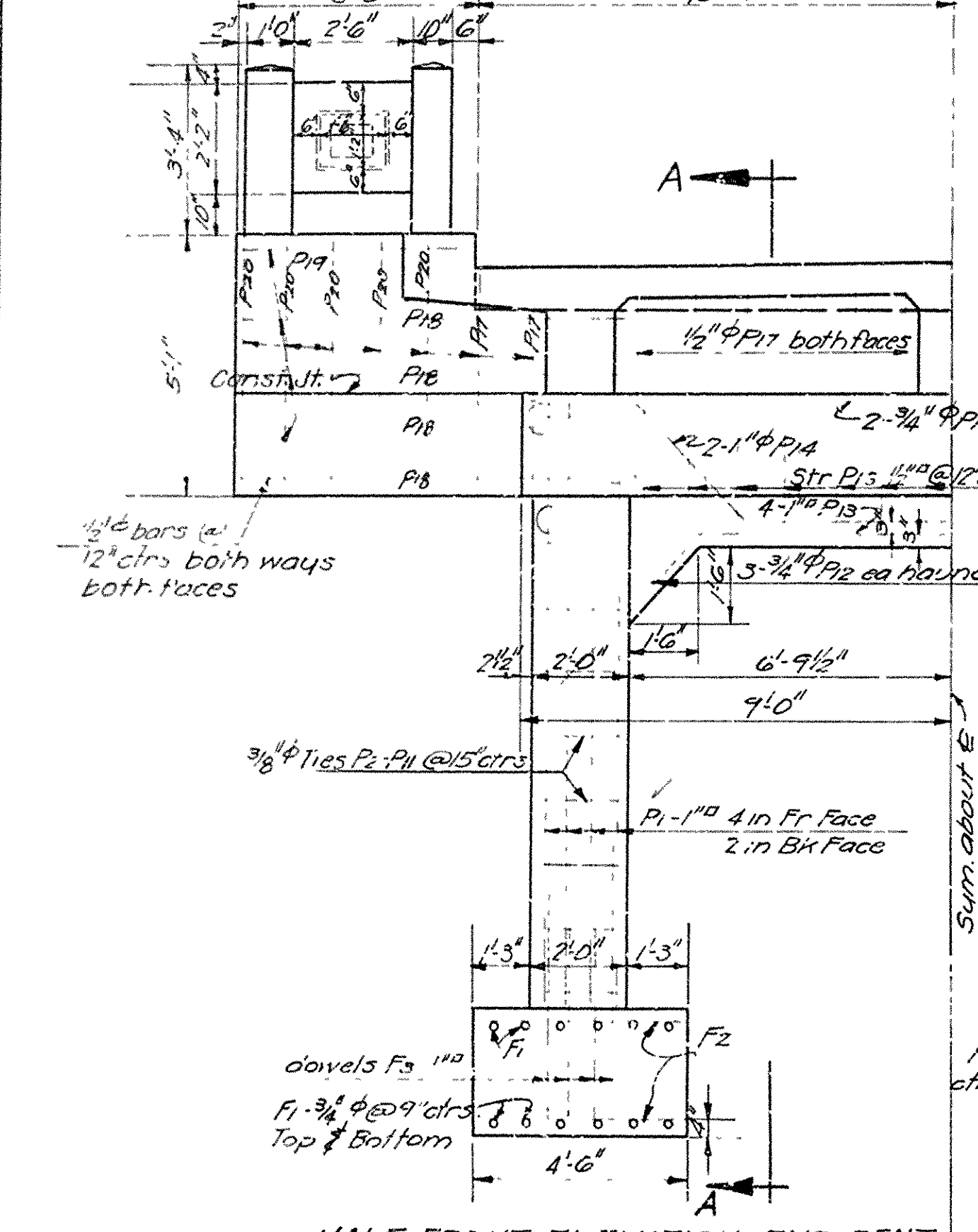
ARKANSAS STATE HIGHWAY DEPARTMENT
LITTLE ROCK, ARK.

Drawn By: E. A. ... Date: ...
Traced By: ... Date: 5-16-29
Checked By: ... Date: ...
Scale: 3/8" = 1' ft.
1/8" as noted
BRIDGE NO. 1140 DRAWING NO. 1628

M. R. ...
BRIDGE ENGINEER

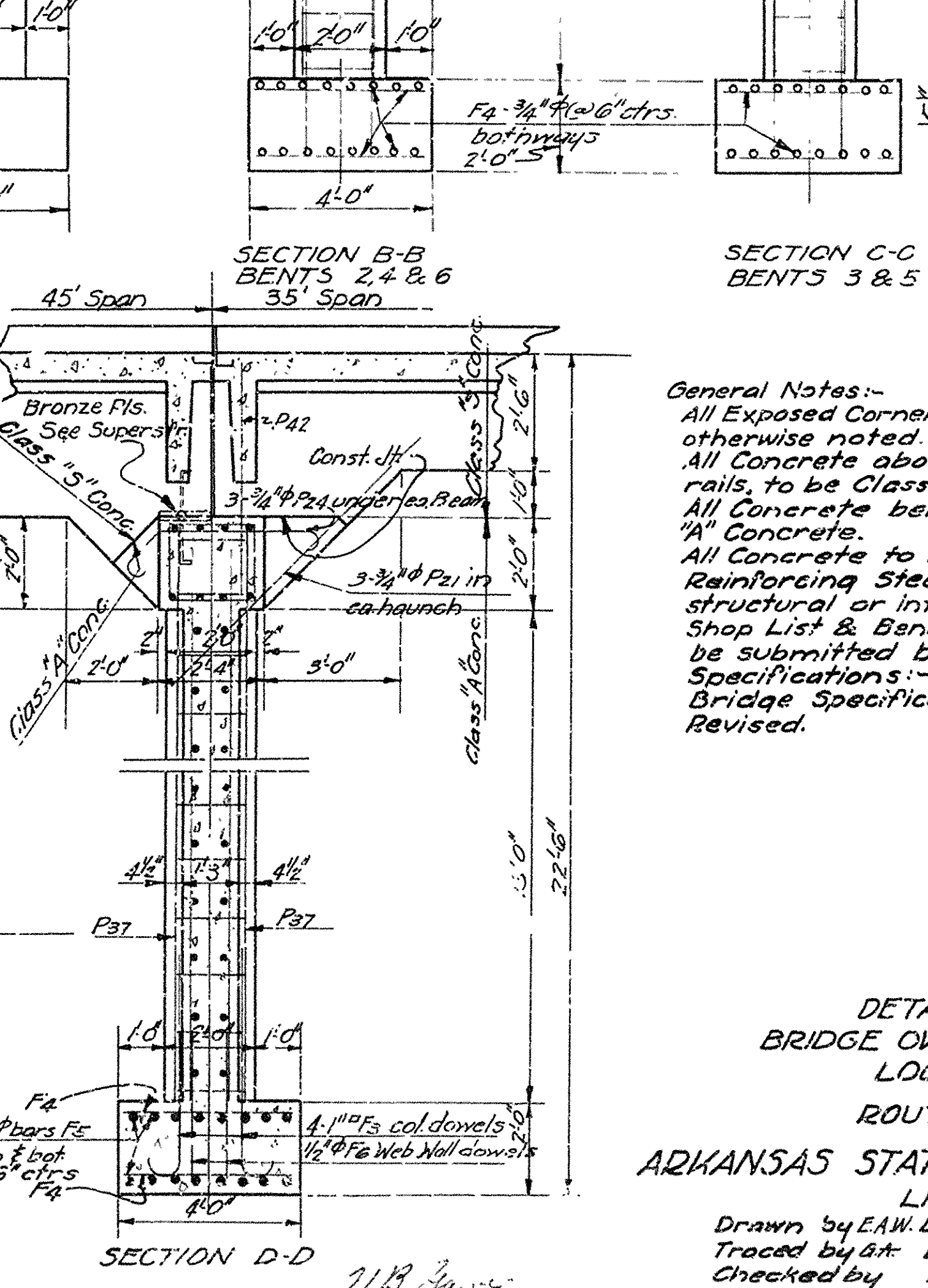
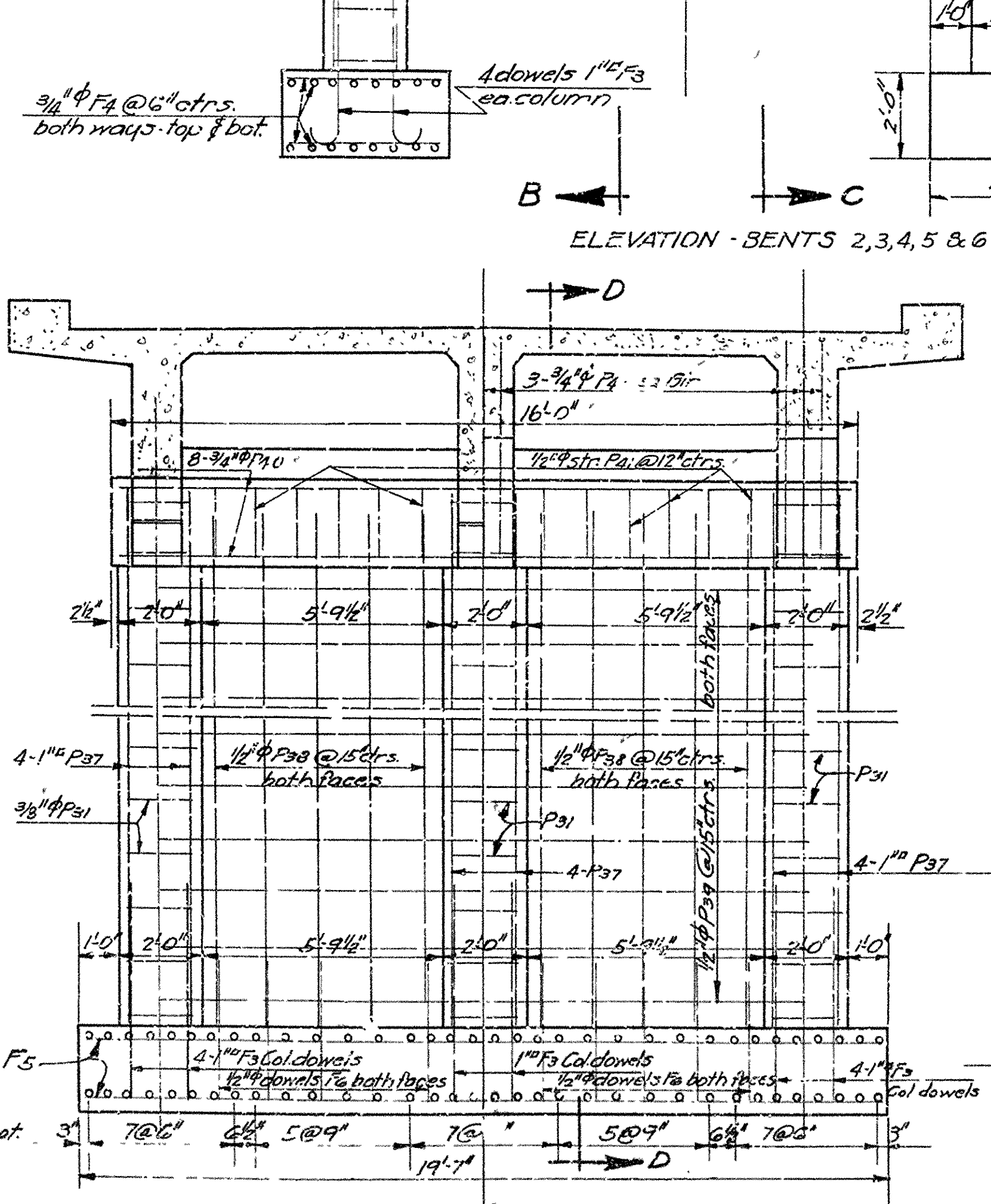
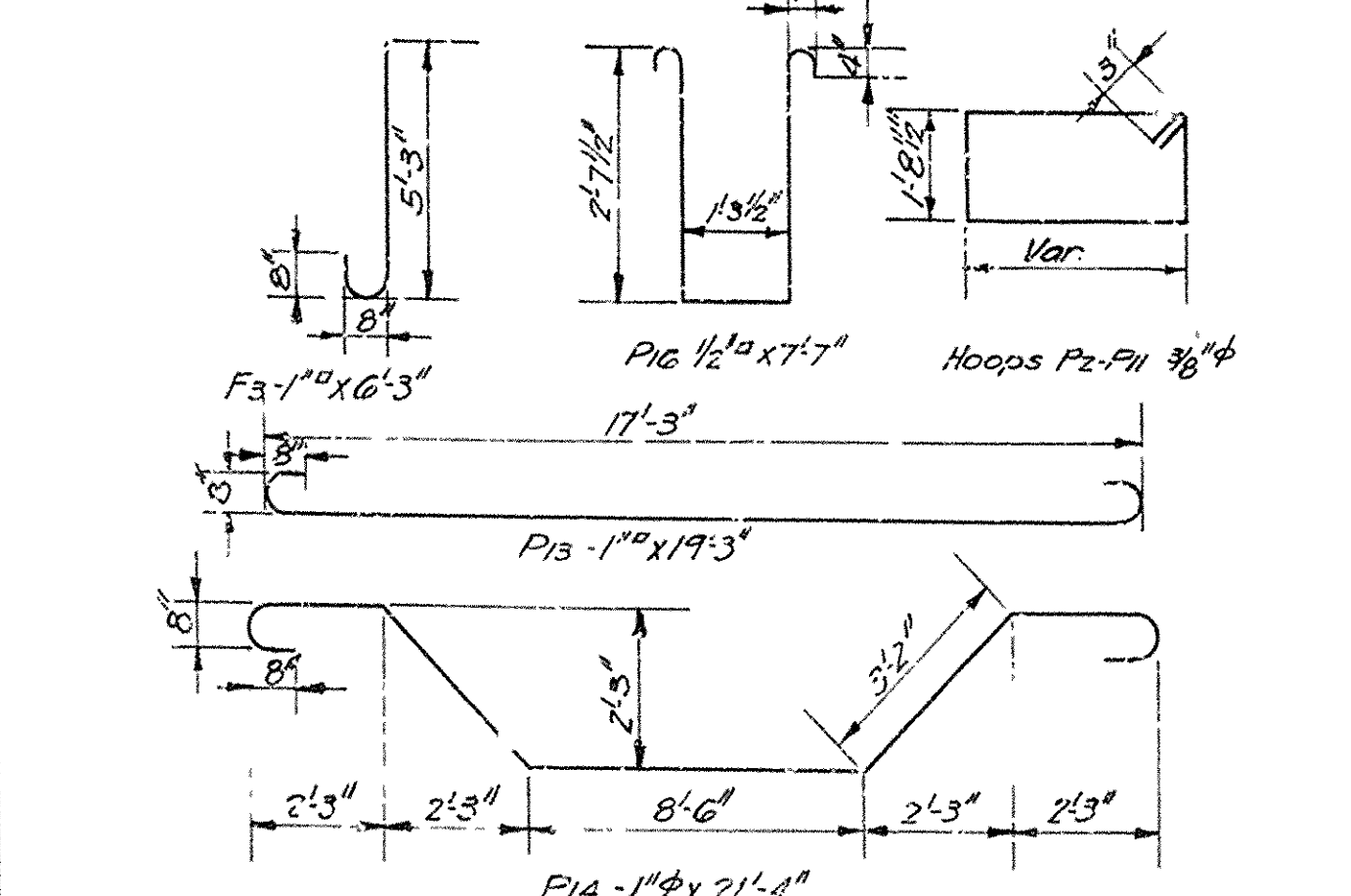
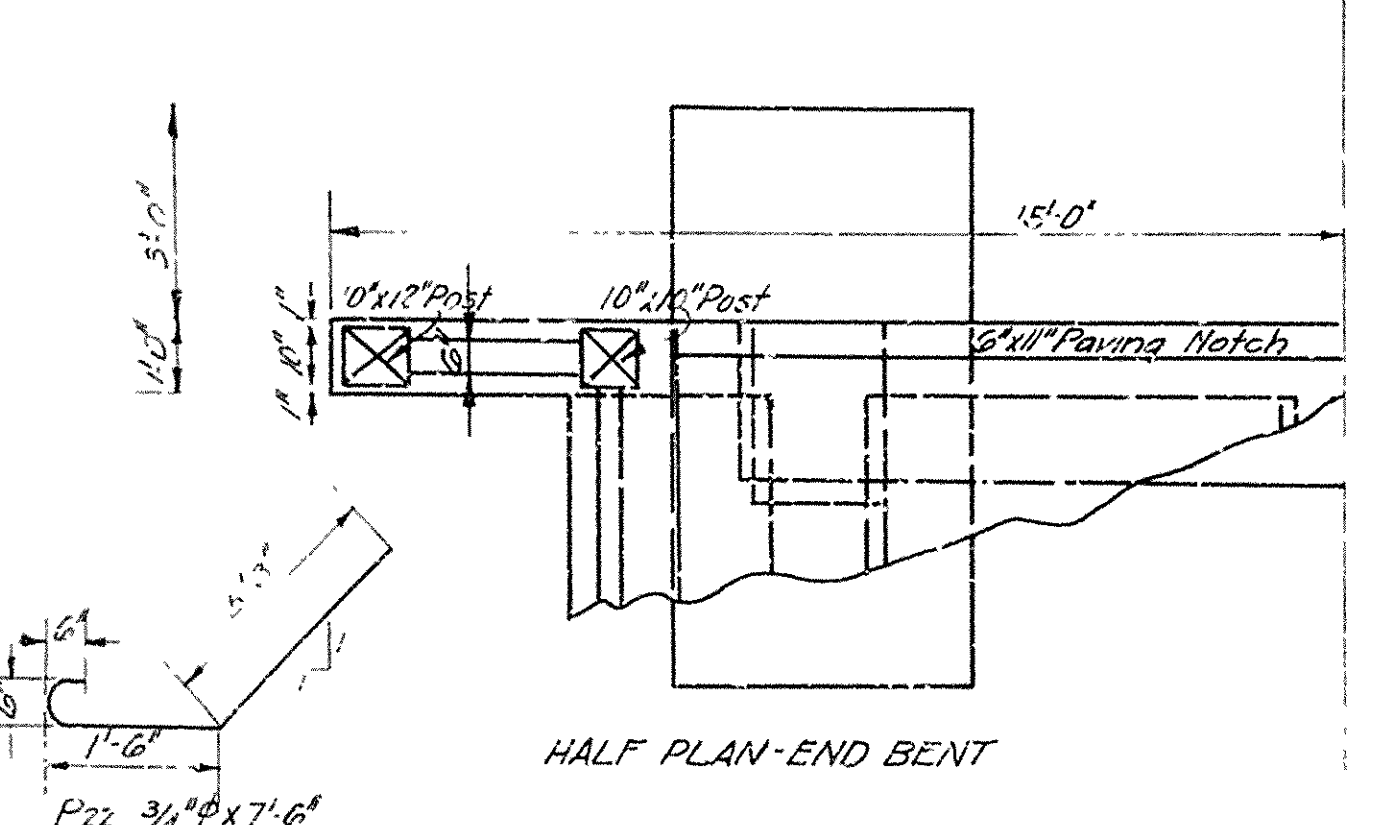
FISCAL YEAR	JOB NO.	SHEET NO.	TOTAL SHEETS
1929	301	5	7

Panel Turnouts Rdway Side Only. Place Name Plates on Rt Hand Turnouts. Panel to be 1'2" x 1'6" and Recessed 1/2" Center Name Plate in Recessed Panel. Plates Furnished by State 10'-0"



COL. STEEL - TABLE OF DIMENSIONS

Bent No.	Dimen. A'	Vert. Steel No.	Vert. Steel Lqts.	3/8" Col. Ties. No.	3/8" Col. Ties. Lqts.
2	11'-3"	P32 B	13'-0"	P31	22 7'-4"
3	11'-0"	P33 B	13'-3"	P31	22 7'-4"
4	12'-0"	P34 B	13'-9"	P31	24 7'-4"
5	14'-0"	P35 B	15'-3"	P31	28 7'-4"
6	16'-0"	P36 B	18'-3"	P31	30 7'-4"



General Notes:-
 All Exposed Corners to have 3/4" Chamfer unless otherwise noted.
 All Concrete above top of column, caps, except Hand-rails, to be Class "S" Concrete.
 All Concrete below top of column caps to be Class "A" Concrete.
 All Concrete to be poured in the dry.
 Reinforcing Steel to be deformed bars of structural or intermediate grade.
 Shop List & Bending Diagrams of Reinf'g Steel must be submitted before fabrication is begun.
 Specifications:- Arkansas Standard Road & Bridge Specifications, Adopted May 30, 1925 & Revised.

DETAILS OF BENTS
 BRIDGE OVER LITTLE SHOAL CREEK
 LOGAN COUNTY
 ROUTE 22. SEC. 4
 ARKANSAS STATE HIGHWAY DEPARTMENT
 LITTLE ROCK, ARK.
 Drawn by EAW. Date 5-10-29
 Traced by at Date 5-14-29
 Checked by Date
 Scale 3/8" = 1'-0"
 BRIDGE ENGINEER
 BRIDGE NO. 1140
 DRAWING NO. 1629

